

THE PLATFORM

Takeda Theater at The Platform Preliminary Technical Specifications

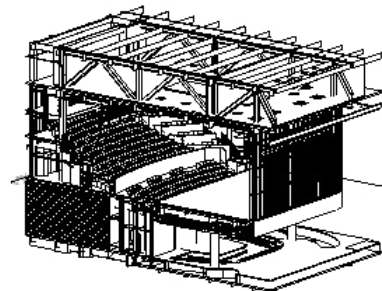
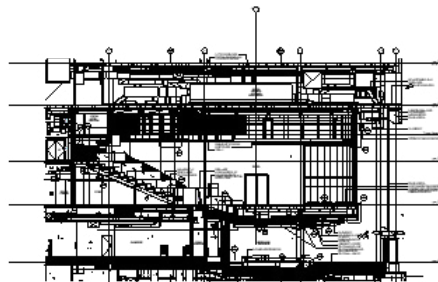
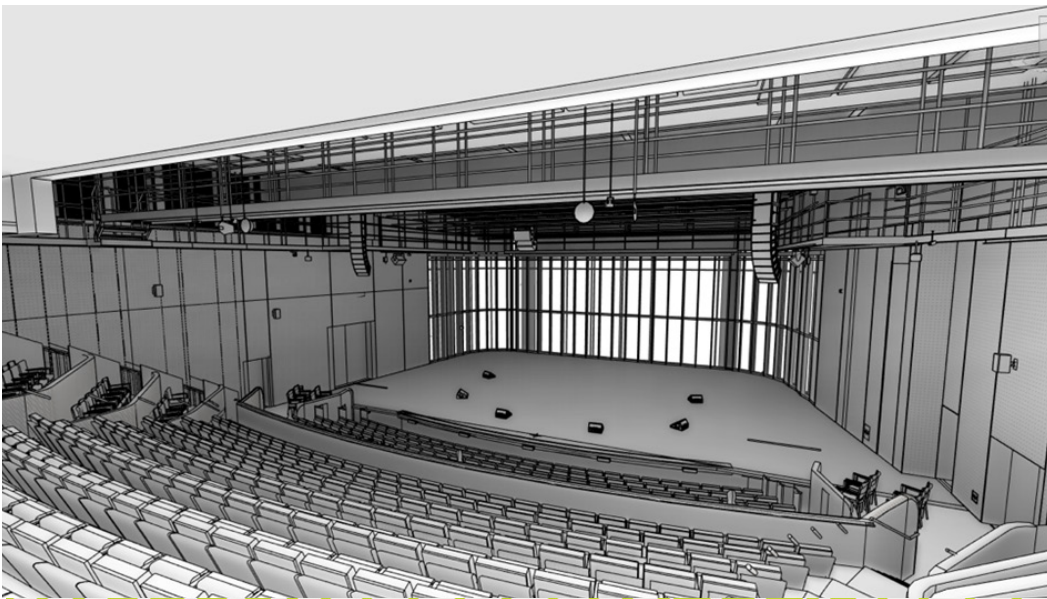


Table of Contents

03	Overview
03	Contacts
04	General Specifications & Dimensions
04	Dressing Rooms & Green Room
05	Stage, Carpentry & Rigging
07	Loading
07	Booths
07	Lighting
10	Audio
11	Video
11	Wardrobe
12	Backline
12	Miscellaneous Stage Equipment
13	Directions
14	Appendix A: Repertory Rigging
15	Appendix B: Repertory Lighting Plot
16	Appendix C: Repertory Masking Alternatives

Preliminary as of August 2025.
Final specs, dimensions, and inventories to be confirmed upon
building completion.

Overview

The Takeda Theater at The Platform is the main stage of a new performing arts center in Kendall Square, Cambridge, MA, currently under construction. Developed by BioMed Realty in consultation with Global Arts Live, The Platform shares a 16-story building with Takeda Pharmaceuticals and is located in a burgeoning biotech district.

The Takeda Theater at The Platform is a 404 fixed-seat theater, with a generous stage area, fully equipped Wardrobe room, and well-appointed Green Room and Dressing Room space for up to 25 artists.

The theater includes a set of galleries and catwalks that make a complete circuit from the control booth area. This includes rigging galleries SR and SL, crossover gallery US, lighting catwalk, and access galleries HR and HL.

The theater's design features an acoustically isolated upstage glass wall that wraps approximately 10' downstage right and left. With 28 winched line sets and walk-along cyclorama tracks underneath the galleries SR, SL and US, a broad variety of masking schemes are available, including no masking with upstage glass either blacked out or open.

Contacts

Maure Aronson Director of Artistic Programs
617-876-4275
maure@globalartslive.org

General Specifications & Dimensions

Seats - 404

Seats within dance sightlines - 350

Stage width (downstage) - 74' 4"

Stage width (upstage) - 57' 1"

Typical masking opening - 40' 0"

Typical border trim - 21' 0"

Depth downstage leg line to upstage glass at centerline - 42' 0"

Downstage leg line (0' 0") to last winch set - 37' 8"

Height: gallery floor to stage deck - 22' 0"

Height: lighting Catwalk Floor to Stage Deck Level - 24' 0"

Lighting throw: Catwalk to 0' 0" downstage leg line - 30' 0"

Projection throw: projector well to 0' 0" downstage leg line - 45' 9"

Projection throw: projector well to projection screen - 58' 9"

Dressing Rooms & Green Room

Dressing Room: 1 Stage Level	1-3 performers (Accessible)
------------------------------	-----------------------------

Dressing Room: 2 Floor 3	6-8 performers (Accessible)
--------------------------	-----------------------------

Dressing Room: 3 Floor 3	7 performers
--------------------------	--------------

Dressing Room: 4 Floor 3	7 performers
--------------------------	--------------

All Dressing Rooms have a stage audio monitor, stage video display, paging, and private restroom with sink and shower.

The Green Room, at stage level, has a refrigerator, dishwasher, microwave, double sink and counters, water filtration, cabinetry, serving area, stage video display, paging, dining area, and lounge area.

Stage, Carpentry & Rigging

Robbins Bio-Channel resilient stage floor system (1500lb point load capacity)

Maple tongue and groove surface stained black

28 winched linesets with Wenger Vantis automated control

Batten Length: 63' 0" line 1; 50' 0" lines 2-27; line 28, 47' 0"

Maximum winch set out trim 27' 6 3/4"

Lifts & Ladders

2 x Genie Lift AWP 25

2 x 3' Type 1a Fiberglass step ladder

4 x 6' Type 1a Fiberglass step ladder

2 x 12' Type 1a Fiberglass step ladder

Dancefloor

Harlequin Reversible Dancefloor 18m x 2m rolls Black/Gray - 6

Harlequin Reversible Dancefloor 18m x 2m rolls Black/White - 6

Platforms

4' x 8' stage decks - 12

4' x 4' stage decks - 4

8" legs and 16-24" supports, 2 x Step units

Stage, Carpentry and Rigging cont.

Rigging

CM Lodestar 1 ton - 8

8-way motor control - 1

JTE Supertruss 12" x 12" Box Truss 10' lengths - 8

JTE Supertruss 12" x 12" Box Truss 5' lengths - 4

JTE Supertruss Ladder 10' lengths - 4

JTE Supertruss Ladder 5' lengths - 2

Triple E Unitrack 50' bi-parting traveler tracks (complete systems) - 2

Soft Goods

Portal Border, Black IFR Velour, 6' 6" x 63' 0" - 1

Portal Legs, Black IFR Velour, 25' 6" x 14' 0" - 2

Borders, Black IFR Velour, 6' 0" x 50' 0" - 6

Legs, Black IFR Velour, 25' 6" x 12' 0" - 12

Cyc, Seamless Bleached White Muslin, 25' 6" x 50' 0" - 2

Black Scrim, IFR Sharkstooth, 25' 6" x 50' 0" - 2

White Scrim, IFR Sharkstooth, 25' 6" x 50' 0" - 1

Traveler panels, Black IFR Velour, 25' 6" x 26' 0" - 4

Traveler Panels, under gallery, Black IFR Velour 21' 6" x 10' 0" - 10

Traveler Panels, under gallery, Black IFR Velour, 21' 6" x 8' 0" - 8

Traveler Panels, under Gallery, Black IFR Velour, 21' 6" x 6' 0" - 6

Downstage R & L Masking, (und. Gallery) Black IFR Velour,
21' 6" x 8' 6" - 2

Loading

Single dock height truck bay with leveler on ground level will accommodate 24-26' straight truck

BOH Elevator serving floors 1, 2 and 3 with 12' x 12' cab

Booths

North Booth: AV

Center Booth: Projection and Followspots

South Booth: Lighting and Stage Management

Lighting

The Takeda Theater at The Platform will have a repertory light plot (coming soon). All modifications must be restored upon load-out unless otherwise agreed.

FOH Lighting Positions

Lighting Catwalk 30' throw to downstage leg line 0' 0"

4 Box Boom Positions R & L FOH (See Drawings)

Booth Rail 45' throw to downstage leg line 0' 0"

Lighting Control

ETC Apex 5 with outboard screens

Grand MA CRV with outboard screens

Lighting Inventory

ETC/High End Halcyon Silent - 12

ETC/High End Sola High Beam 3000 - 10

Lighting cont.

Source 4 Series 3 Lustre x8 19° - 30

Source 4 Series 3 Lustre x8 26° - 82

Source 4 Series 3 Lustre x8 36° - 56

S4 Lens Tube 36° XDLT - 12

S4 Lens Tube 36° EDLT - 12

S4 Lens Tube 50° EDLT - 12

ETC Fos 4 10" Fresnel Lustre x8 - 14

ETC Color Source Fresnel V Max - 37

Robert Juliat Dallis 860 Cyc Light - 30

Robert Juliat Tristan LED Follow Spot - 2

Astera Pixel Brick - 8

Astera Quick Spot - 8

Arri True Blue ST5 Fresnel 5kw incandescent - 2

ETC Sensor3 6x 6kw Dimmer Pack - 1

6.25" Half Hat - 24

7.5 " Half Hat - 2

6.25" Top Hat - 32

7.5" Top Hat - 32

6.25" Donut - 30

7.5" Donut - 30

Drop in Iris - 15

Lighting cont.

Pattern Holder A size - 30

Pattern Holder B size - 30

Side Arms 12" - 60

Side Arm 18" - 32

Side Arms 24" - 6

10" Boom Base - 12

Custom Small footprint boom base - 12

Mathews Rover Stand - 4

50lb. Saddlebag Sandbag - 24

Generous inventory of 1.5" ID black pipe and True 1, DMX, L-21, L6 and AC Cable

Effects

MDG Atmosphere Haze Machine - 2

City Theatrical Aqua Fogger Dry Ice Foggers - 2

Audio

L-C-R Meyer Sound Lina L & R Arrays, X-40 Center Cluster

3 x Meyer Sound 900LFC Subs

9 x Front fill Meyer UP4 Slim

4 x Delay Speakers Meyer UP4 Slim (under booths)

8 x Meyer MJF-208 Monitor speakers

2 x Meyer X-40 Foldback/Effects Speakers

6 x Meyer X-20 Foldback/Effects Speakers

2 x Yamaha Dm7 64 channel 24 fader console (FOH and Monitor)

8 x Shure ULXD 2/B58 handheld wireless mics

8 x Shure ULXD 1 Body Pack transmitters

8 x Shure P10R+ personal monitor wireless body pack

10 Clear Com Wireless belt packs

8 Clear Com digital party line belt packs

18 single muff headsets with microphone s

Q-Lab Computer Mac Mini

Pro Tools Editing Station Mac Studio

Large Inventory of microphones TBD

Large Inventory of stands and accessories TBD

24 x Assisted Listening Receivers, Listen Technologies LR5200-IR-P1

Video

3 x 10k lumen Digital Projection modular laser light source

Fiber optic light transmission

Digital Projection Titan 4k 3840 x 2160 video projection head

Projector Lens 1.16-1.49:1

Projector lens 1,87-2.56:1

Roll down projection screen 160" x 284" (See line schedule for position)

2 x Portable Video Projector Christie Digital 10k laser phosphorous 44K10HS

2 x .38:1 Ultra wide lenses

New Tek Tricaster Pro 1 Video Switcher

New Tek TC1SP Control Panel for Video Switcher

Panasonic AW-RP 150 Camera Controller

4 x Panasonic UE-100 Video Production Cameras

4 x Panasonic AG-CX370 Portable Camera Kits with tripods and monitors

Wardrobe

2 washers

2 dryers

Sink with counter

Air-dry alcove

Sewing counter

Fitting area

Equipped with sewing machines, Z-racks, laundry carts, steamers, irons, ironing boards, worktable

Backline

Yamaha 5 piece Maple Drum Kit 22" Kick - 1

Zildjian 4 x Cymbal pack - 1

Mesa Boogie Filmore 25 Tube Guitar Amp - 2

Gallien-Kreuger Legacy 115Bass Amp - 1

Yamaha YC88 88 key keyboard - 1

Roland 990 Pro Keyboard Amp - 1

K & M Omega Pro Key Board Stand - 1

Yamaha C6 Grand Piano - 1

Miscellaneous Stage Equipment

Stage Manager's rack on rolling base, with clock module, 2 x 8" video display (stage view and IR), lighting and AV touch screens, Intercom, paging.

Manhasset M48 Music Stands - 20

Manhasset M54 Conductor's Stand - 1

Music Stand Lights - 40

Wenger Artist Chairs - 12

Podium, Panel Table and Chairs

8' x 30" Folding Tables (Black) - 4

6' x 30" Folding Tables (Black) - 4

8' x 18" Folding Tables (Black) - 4

6' x 18" Folding Tables (Black) - 4

Folding Chairs - 24

Miscellaneous Stage Equipment cont.

Wooden Stools 18" - 4

Wooden Stools 30" - 4

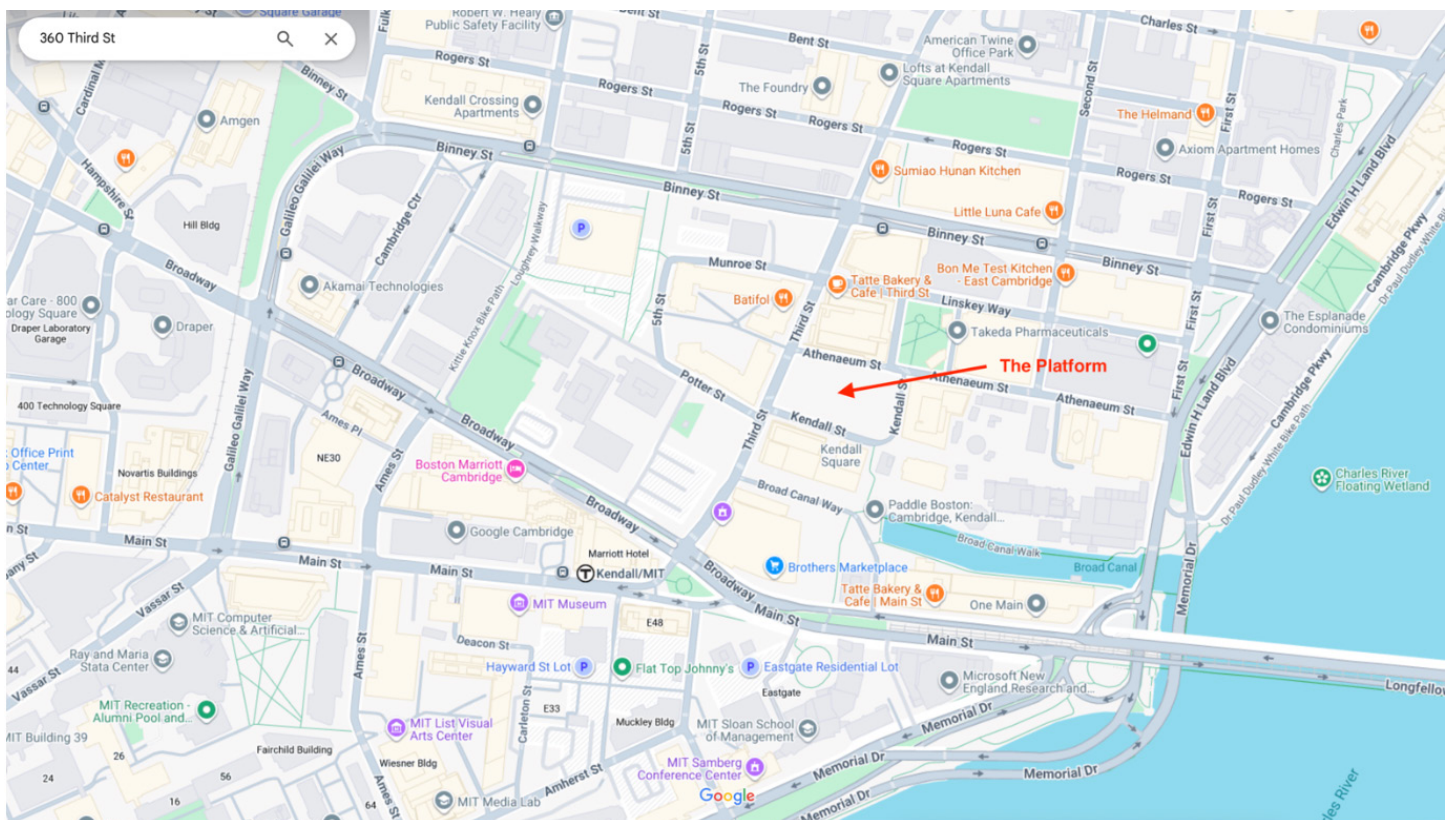
8' Ballet Barres - 6

Directions

The Platform
585 Kendall Street
Cambridge, MA 02142

Loading dock located on Atheneum Street

Please note that Storrow Drive in Boston has a truck and bus exclusion due to low clearances. Memorial Drive in Cambridge also does not allow trucks or other heavy vehicles.



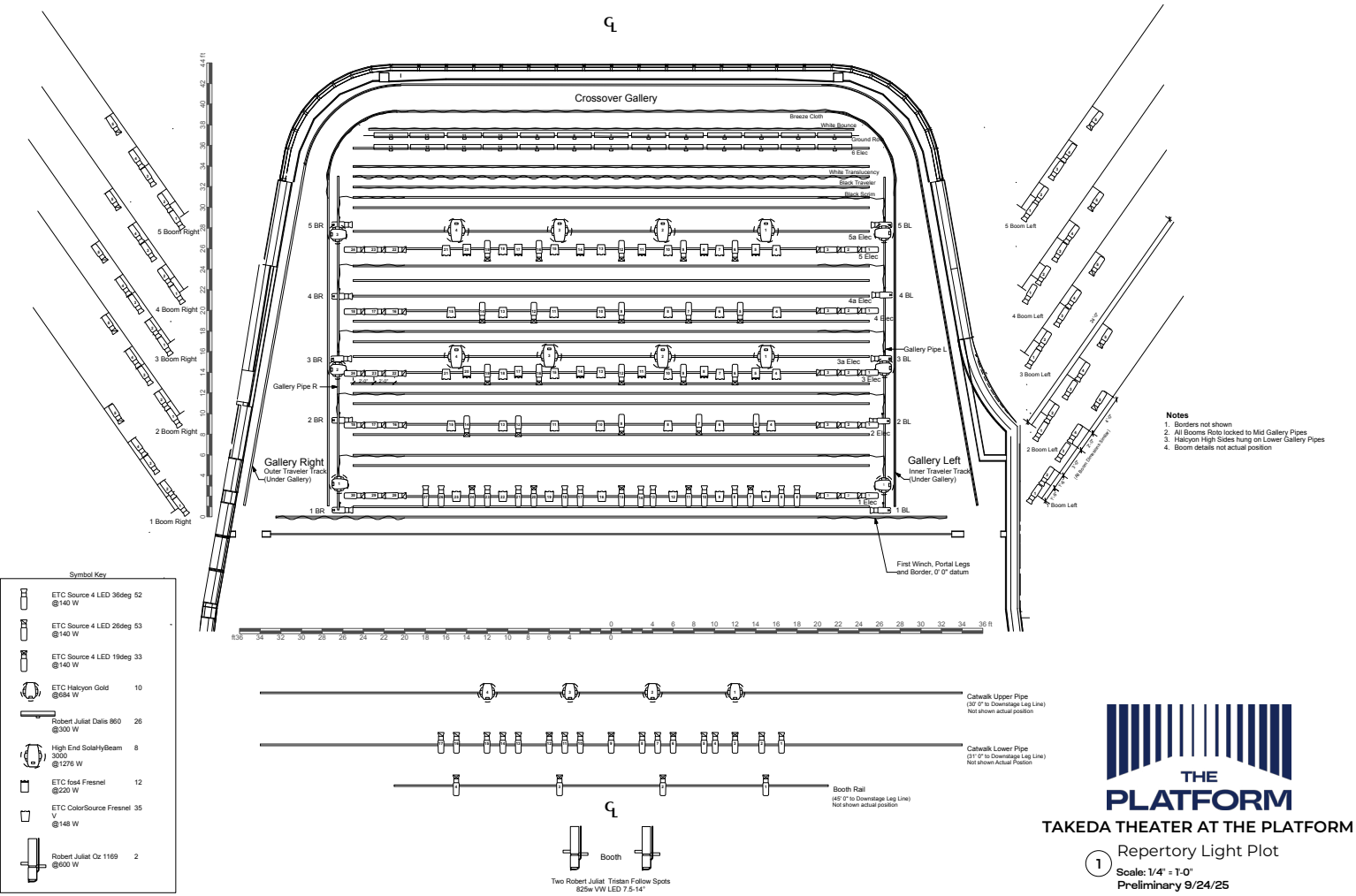
Appendix A:

The Platform Theatre Repertory Line Schedule

				Traditional Dance/Music Hang	Rev. 8/28/25	Preliminary	
<u>Winch</u>	<u>Distance</u>	<u>Load</u>	<u>Note</u>		<u>Trim</u>	<u>Opening</u>	<u>Batten Length</u> <u>Note</u>
1	0' 0"	1 Black Portal	w/ Legs on tail down If required		21' 0"	40' 0"	65' 0"
2	1' 0"	Spare	Possible DS Scrim, Traveler				50' 0"
3	2' 0"	1 Electric			24' 6"		50' 0"
	3' 6"	Beam Clamps	For Truss Rigging per show				On C/L Steel and 22' 0" L & R
4	5' 0"	2 Black Border			21' 0"		50' 0"
5	6' 0"	2 Black Legs	40' 0" opening w/ TAB DS			40' 0"	50' 0"
	7' 0"	Beam Clamps	For Truss Rigging per show				On C/L Steel and 22' 0" L & R
6	8' 0"	2 Electric			25' 0"		50' 0"
7	9' 0"	Spare					
	10' 0"	Beam Clamps	For Truss Rigging per show				On C/L Steel and 22' 0" L & R
8	11' 0"	3 Black Border	If Desired, or traveler		21' 0"		50' 0"
9	12' 0"	3 Black Legs	40' 0" opening w/ TAB DS			40' 0"	50' 0"
10	13' 0"	Projection Screen	On Wenger Winch Set				50' 0" Roll Down--
11	14' 0"	3 Electric					50' 0"
12	15' 0"	3 a Electric					50' 0" Brest US if necessary
	16' 0"	Beam Clamps	For Truss Rigging per show				On C/L Steel and 22' 0" L & R
13	17' 0"	4 Black Border			20' 9"		50' 0"
14	18' 0"	4 Black Legs	40' 0" opening w/ TAB DS			40' 0"	50' 0"
15	19' 0"	Spare					50' 0"
16	20' 0"	4 Electric					50' 0"
17	21' 6"	4a Electric					50' 0"
18	23' 0"	5 Black Border					50' 0"
	23' 8"	Obstruction Overhead					XX
19	24' 5"	5 Black Legs	40' 0" opening w/ TAB DS		25' 6"	40' 0"	50' 0"
20	26' 0"	5 Electric					50' 0"
21	27' 6"	5a Electric					50' 0"
	29' 0"	Beam Clamps	For Truss Rigging per show				On C/L Steel and 22' 0" L & R
22	30' 0"	6 Black Border	If Desired, or 5a Electric		20' 0"		50' 0"
23	31' 0"	6 Black Legs	40' 0" Opening		25' 6"	40' 0"	50' 0"
24	32' 0"	Black Scrim			25' 6"		50' 0"
25	33' 0"	Black Traveler			25' 8"		50' 0"
26	34' 0"	White Translucency	Seamless Bleached White Muslin Cyc		25' 6"		50' 0"
	34' 11"	Beam Clamps	For Truss Rigging per show				On C/L Steel and 22' 0" L & R
27	35' 10"	6 Electric Cyclight	Ground Row Underneath on Deck		25' 0"		50' 0"
28	37' 8"	White Bounce	Seamless Bleached White Muslin Cyc		25' 6"		47' 0"
DH	38' 2"	Black Breeze Cloth	Traveler Track Underneath Gallery				
DH	40' 9"		Traveler Track Underneath Gallery				
	42' 0"	US Glass Wall	w/ Motorized Blackout Curtains				

Appendix B:

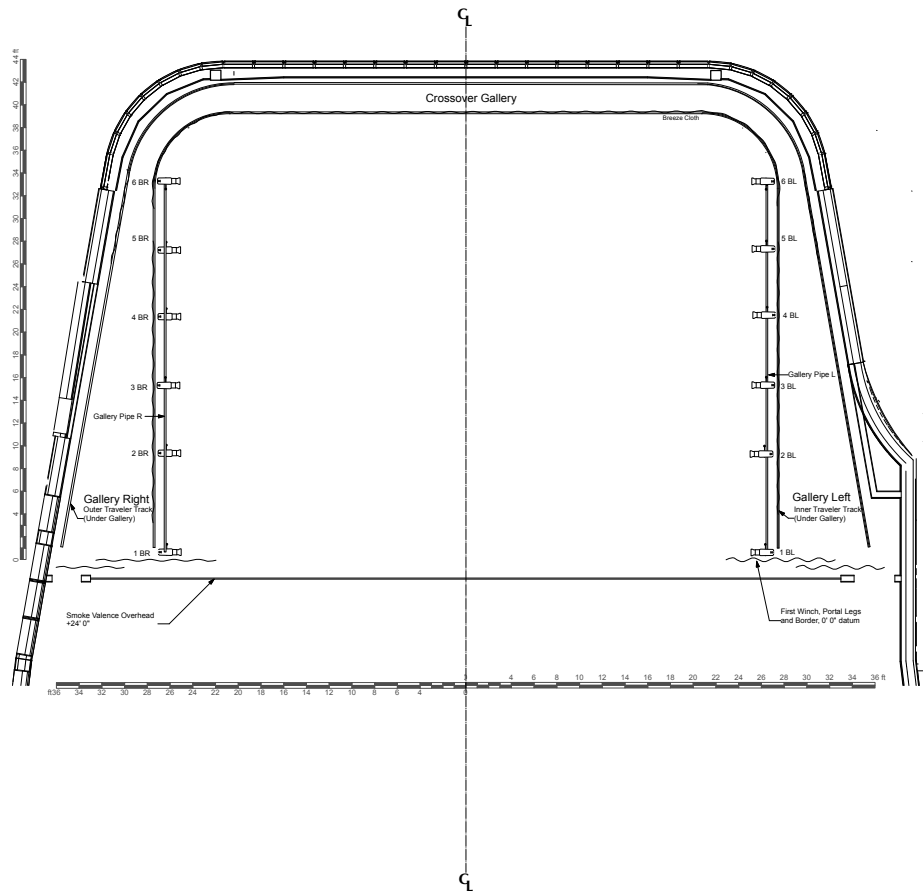
[DOWNLOAD VECTORWORKS FILES](#)



Appendix C:

[DOWNLOAD VECTORWORKS FILES](#)

- Notes**
- 1. Can be hung with or without booms
 - 2. Can be hung with or without borders
 - 3. Many Variations of this scheme are possible
 - 4. This "German" masking scheme opens sightlines considerably
 - 5. Openings for entrances are possible in many locations including upstage
 - 6. Making tabs are stocked in 6', 8' and 10' widths for flexibility of layout
 - 7. Theatre legs can be hung on Gallery Pipes to take side masking if higher if booms are not used
 - 8. Tabs can be hung on outer Gallery Track to make similar layout but wider and or deeper. May eliminate crossover.



THE PLATFORM
TAKEDA THEATER AT THE PLATFORM

② **Alternative Masking**
Scale: 1/4" = 1'-0"
Preliminary 9/24/25